

**C.H.I.**   
OVERHEAD DOORS

WINDBREAKER SERIES GARAGE DOORS

The ultimate combination of beauty and brawn.

**C.H.I. OVERHEAD DOORS**  
**WINDBREAKER**  
**SERIES**

PLANKS model 2327 in Accents Cedar shown with short impact windows and black frames.



# TIMELESS COLLECTION

Timeless style and traditional stamped steel designs to complement many home styles.



**STAMPED CARRIAGE** model 5216 in Accents Dark Oak.



**STAMPED CARRIAGE**, model 5916 in Accents Mahogany.



**RAISED PANEL**, model 4216 in Accents Cedar.

Family	Description	Panel Style	Color Options <sup>1</sup>	Accents Woodtones <sup>1</sup>
Raised Panel		Raised Panel - Short	Solid Colors: White, Almond, Sandstone Brown, Bronze, Gray, Desert Tan, Black, Graphite, Evergreen	Walnut, Driftwood, Mahogany, Cedar, Dark Oak, Natural Oak, Carbon Oak
		Raised Panel - Long	Painted Woodtones: Modern, Classic	
Stamped Carriage House		Stamped Carriage - Short	Solid Colors: White, Almond, Sandstone Brown, Bronze, Gray, Desert Tan, Black, Graphite	Walnut, Driftwood, Mahogany, Cedar, Dark Oak, Natural Oak, Carbon Oak
		Stamped Carriage - Long	Painted Woodtones: Modern, Classic	
Stamped Shaker		Stamped Shaker	Solid Colors: White, Almond, Sandstone Brown, Bronze, Gray, Desert Tan, Black, Graphite	Walnut, Driftwood, Mahogany, Cedar, Dark Oak, Natural Oak, Carbon Oak
			Painted Woodtones: Modern, Classic	

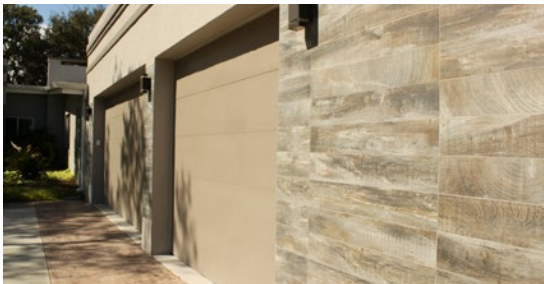
<sup>1</sup>Note: Color options & availability vary by model/construction type

# CONTEMPORARY COLLECTION

Featuring flush exteriors and custom design options to enhanced both modern and classic architecture.



**PLANKS** model 2328 in Accents Dark Oak.



**SKYLINE FLUSH**, model 2128 in Desert Tan.



**PLANKS**, model 2328 in Accents Driftwood.

Family	Description	Panel Style	Solid Color Options <sup>1</sup>	Accents Woodtones <sup>1</sup>
Skyline Flush		with No Windows or Short Windows	White, Almond, Sandstone Brown, Bronze, Gray, Desert Tan, Black, Graphite	Walnut, Driftwood, Mahogany, Cedar, Dark Oak, Natural Oak, Carbon Oak
		with Long Windows		
		with Oversized Windows		
Planks		with No Windows or Short Windows	White, Almond, Sandstone Brown, Bronze, Gray, Desert Tan, Black, Graphite	Walnut, Driftwood, Mahogany, Cedar, Dark Oak, Natural Oak, Carbon Oak
		with Long Windows		
		with Oversized Windows		

<sup>1</sup>Note: Color options & availability vary by model/construction type



# CARRIAGE COLLECTION

Classic appearance of carriage house doors available in a variety of materials and designs.



STEEL OVERLAY, model 5600 Design 32 in White.



24 DESIGNS AVAILABLE  
Visit [chiohd.com](http://chiohd.com)



SHORELINE, model 5602, Design 32, Driftwood, with Faux windows.



STEEL OVERLAY, model 5600, Design 30, in Sandstone.

Family	Description	Panel Style	Color/Woodtones <sup>1</sup>
Shoreline		Accents Overlay	Walnut, Driftwood (Coming Soon - Cedar, Dark Oak)
Overlay Carriage		Steel Overlay	White, Almond, Sandstone, Bronze 2-Tones: White/Almond, White/Sandstone, White/Bronze
		Wood Overlay	Cedar, Mahogany
		Fiberglass Overlay	White, Almond, Sandstone, Bronze

<sup>1</sup>Note: Color options & availability vary by model/construction type

# FULL-VIEW COLLECTION

Aluminum and glass combine to create a unique and exceptional modern garage door style.





**FULL-VIEW**, model 3295 Black with tinted glass.



**FULL-VIEW** model 3295 in Clear Anodized with frosted glass.



**FULL-VIEW** model 3297 in Black with white laminate glass.

Family	Description	Panel Style	Color Options
Full-View		Aluminum Rail & Stile Insulated Rail & Stile	Clear Anodized, Choose one of our over 200+ Powder Coat Colors 



FIND DOOR WIND LOAD RATINGS  
back cover



# Customize your Door with Window Options



## Short & Long Impact Windows Available

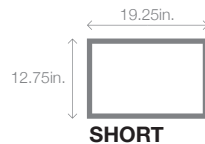
Your home's location, size and design are factors in determining if your garage door needs to be impact-rated.

C.H.I. has two styles of impact-rated windows (Short Windows and Long Windows) that you can incorporate into your garage door design to add style and light to your garage space.

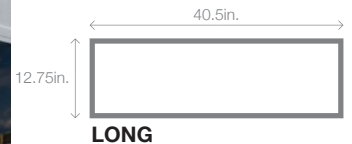
Windows can be added horizontally across or stacked vertically to complement the Contemporary Collection door styles.



### SHORT IMPACT WINDOWS



### LONG IMPACT WINDOWS



#### SHORT - INSERTS 19.25in x 12.75in



Plain



Stockton



Cascade



Prairie



Waterton



Sherwood



Cathedral



Sunburst

#### LONG - INSERTS 40.5in x 12.75in



Plain



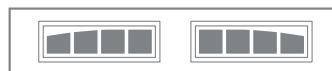
Stockton



Arched Stockton



Madison



Arched Madison



Cascade



Prairie



Waterton



Sherwood



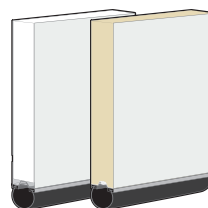
Sunburst

### FAUX WINDOWS



Maintain strength and security with faux windows to provide an appearance of tinted glass.

Faux Windows are available on all Carriage Collection Overlay Models.

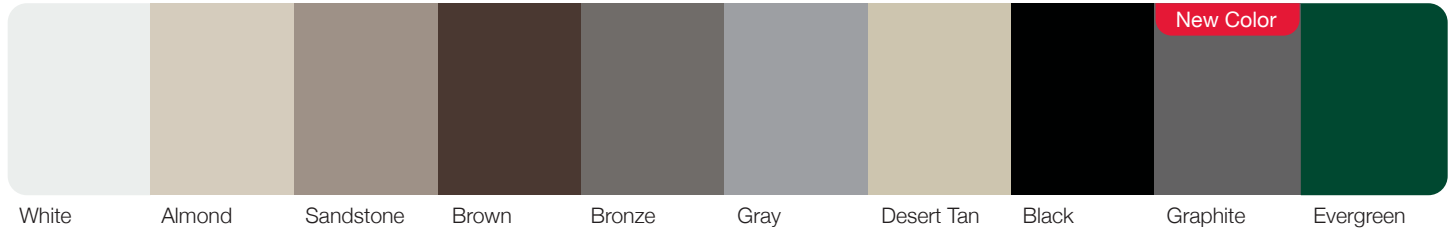


### LONG PANEL IMPACT WINDOWS AVAILABLE ON SANDWICH CONSTRUCTION DOORS

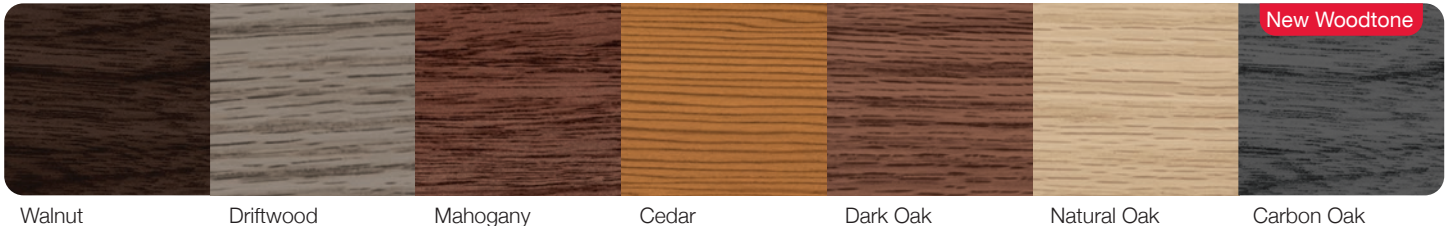
Long impact windows can be placed in sandwich construction doors. These models utilize exterior and interior steel skins with either a polystyrene or polyurethane core of insulation.

# Colors and Woodtones

## SOLID COLORS



## ACCENTS WOODTONES



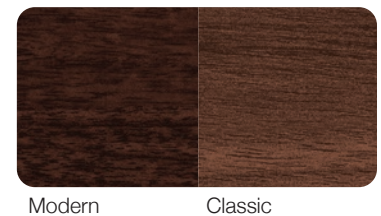
## 2-TONE COLORS (OVERLAY CARRIAGE)



## WOOD (OVERLAY CARRIAGE)



## MODERN WOODTONES



Our in-house powder coating provides multiple color options while providing a maintenance free, durable finish.



Design your door today at  
[doorvisions.chiohd.com](http://doorvisions.chiohd.com)



SKYLINE FLUSH, model 2128 in White with short panel impact windows.

# C.H.I. Residential Door Wind Load Ratings

**Exposure B with a mean roof height of <30', >10° roof slope**

Options on doors up to 16' wide. Max pressure may vary based on door width. Wider doors available<sup>1</sup>.



Panel Construction/Gauge		Max PSF 16' Wide	Standard Wind Load Windows			Impact-Rated Door	Impact Windows	
			Short	Long	Oversized		Short	Long
<b>Raised Panel</b>								
Models 2250 / 2251	Pan, Short Panel, 25 ga	44.0 / -49.0	•			•	•	
Models 2240 / 2241	Pan, Short Panel, 24 ga	44.0 / -49.0	•			•	•	
Models 4250 <sup>2</sup> / 4251 <sup>2</sup>	Pan, Long Panel, 25 ga	44.0 / -49.0	•	•		•	•	
Models 4240 <sup>2</sup> / 4241 <sup>2</sup>	Pan, Long Panel, 24 ga	44.0 / -49.0	•	•		•	•	
Models 2283 / 2216	Sandwich, Short Panel	43.0 / -48.3	•			•	•	
Models 4283 / 4216	Sandwich, Long Panel	43.0 / -48.3		•		•		•
<b>Stamped Carriage</b>								
Models 5250 <sup>2</sup> / 5251 <sup>2</sup>	Pan, Short Panel, 25 ga	44.0 / -49.0	•	•		•	•	
Models 5950 <sup>2</sup> / 5951 <sup>2</sup>	Pan, Long Panel, 25 ga	44.0 / -49.0	•	•		•	•	
Models 5283 / 5216	Sandwich, Short Panel	43.0 / -48.3			•	•		•
Models 5983 / 5916	Sandwich, Long Panel	43.0 / -48.3			•	•		•
<b>Shaker</b>								
Models 2550 <sup>2</sup> / 2551 <sup>2</sup>	Pan, 25 ga	44.0 / -49.0	•	•		•	•	
Models 2583 / 2516	Sandwich	43.0 / -48.3		•	•	•		•
<b>Skyline Flush</b>								
Models 2150 / 2151	Pan, No/Short Windows, 25 ga	44.0 / -49.0	•			•	•	
Models 2140 / 2141	Pan, No/Short Windows, 24 ga	44.0 / -49.0	•			•	•	
Models 4150 <sup>2</sup> / 4151 <sup>2</sup> (25 ga)	Pan, Long Windows, 25 ga	44.0 / -49.0	•	•		•	•	
Models 4140 <sup>2</sup> / 4141 <sup>2</sup> (24 ga)	Pan, Long Windows, 24 ga	44.0 / -49.0	•	•		•	•	
Models 2127 / 2128	Sandwich, No/Short Windows	43.0 / -48.3	•			•	•	
Models 2147 / 2148	Sandwich, Long Windows	43.0 / -48.3		•		•		•
Models 2157 / 2158	Sandwich, Oversized Windows	43.0 / -48.3			•	•		•
<b>Planks</b>								
Models 2327 / 2328	Sandwich, No/Short Windows	43.0 / -48.3	•			•	•	
Models 2347 / 2348	Sandwich, Long Windows	43.0 / -48.3		•				
Models 2357 / 2358	Sandwich, Oversized Windows	43.0 / -48.3			•	•		•
<b>Carriage Collection</b>			<b>Carriage House Windows</b>					
Models 5300 / 5400 / 5500 / 5600 / 5700 / 5800	Sandwich, Steel, Wood, Fiberglass	42.1 / -46.9		•		•		Faux
Model 5602	Sandwich, 27 ga	42.1 / -46.9		•		•		Faux
<b>Full-View Aluminum</b>			<b>Fully Glazed</b>					
Model 3295	Rail/Stile, no insulation rails	41.8 / -46.6		•				
Model 3297	Rail/Stile, insulated rails	41.8 / -46.6		•				

<sup>1</sup> For additional information on windload requirements and availability, contact your local C.H.I. Dealer. <sup>2</sup> Short panel windows required for higher pressures on pan-constructed doors.



## A BETTER BUYING EXPERIENCE

All C.H.I. doors, replacement parts, and accessories are sold only through our network of C.H.I. dealers: dedicated professionals who install and service our doors with the same quality and workmanship we use to manufacture them.

chiohd.com | 1485 Sunrise Drive | Arthur, IL 61911 | USA

Your Local Garage Door Professional